

SHIP DATA NEWS

June 2007



ERWIN J STOPPELS

Contact Details

FREEPHONE 0800 649 696
Telephone +64 3 358 3219
Facsimile +64 3 358 4490
erwin@mgpublications.co.nz

Help us to help you

Help us to help you by advising on how we can enhance our web site and services to meet your needs. Please email us your feedback.

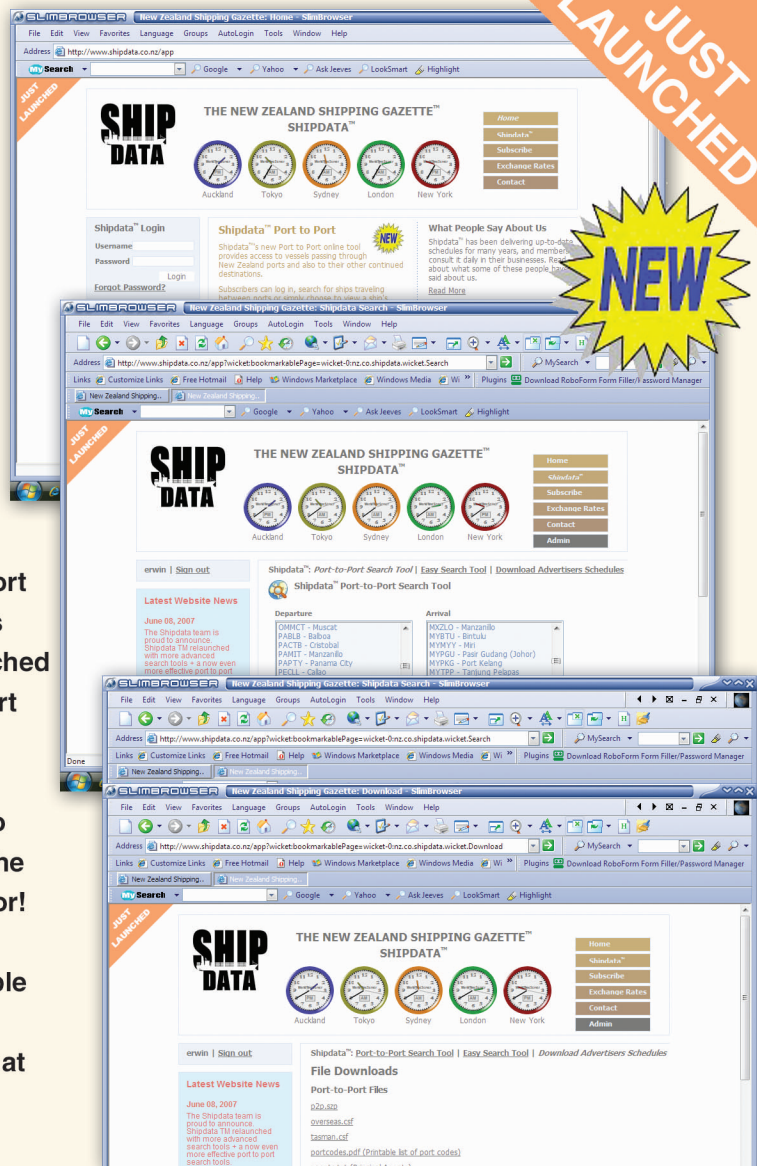


Another great new feature on the Shipdata™ website gives you the current Auckland time and time difference in Sydney, Tokyo, London and New York.

The Shipdata™ team is proud to announce it has launched a new website with more advanced search tools and even more effective Port-to-Port search tools. Wow check it out! You asked for it and now here it is. With our new online Shipdata™ the vessels which have an ETA and ETD from New Zealand can be quickly sourced using the Port-to Port tool. Unlike before, overseas port stops can now be searched in the Shipdata™ Port-to-Port search tool.

Check the Flash Video demo to see how we have added the tool you have been asking for!

You will find this an invaluable tool if you are an importer, exporter or manufacturer that requires up-to-date vessel movements information.



Information moves cargo!

What people say about Shipdata™

S B Global Logistics

To complete the Global Solutions picture, we continually evaluate and invest in new technology to ensure our systems provide us with a comprehensive facility and the most up-to-date information available. The newly designed ship data software allows us both to accurately plan and track the progress of vessels for both import and export clients. We are especially impressed with the online search tools. The vessels which have overseas port stops from New Zealand can now also be quickly searched with the new enhanced port-to-port tool, unlike the previous ship data versions. The advertisers' schedules are now available to download in a universal pdf format making for an easy print out or to be saved on your computer. Should you wish to print the search results this can be done by a click of the mouse.

We find these facilities of great benefit as we can give 'real time' information to our clients and therefore it is used by all our operators on a daily basis. You also will find this an invaluable tool if you are an importer, exporter or manufacturer that requires up-to-date vessel movements.

Well done shipdata team.

Jed Graham j.graham@sinfo.co.nz
Customs Supervisor

